



WELCOME TO

KAMYAKA WOODS



Koino Farms
BACK TO THE ROOTS



A tropical villa with a swimming pool and lush greenery. The villa has a modern design with large windows and a covered patio area. The pool is surrounded by a concrete deck and has several lounge chairs. The background is filled with palm trees and other tropical plants.

FAMILY HEALTH HAPPINESS

Are the most important quality of our life...

*which we may unknowingly ignore
in the hustle bustle of our life...*



ABOUT ANUGRAHA FARMS

We are pioneers in Agro-realty providing customized farmland to suit your requirement and budget with an option to manage the farmland for you. We have been investing in farmlands for over 20 years and understand the benefits of having this asset class in a modern and diversified portfolio. At Anugraha farms we believe in building strong farm communities that can fully sustain the developing needs and demands of our future. Our Plan is to bring farmlands near Bangalore to those who love nature and the company of like-minded people. We encourage Natural Farming Principles and adhere to sustainable living as the core value.



Presents

KAMYAKA WOODS

Fully Managed Luxury Farm Community

A premium gated community spread across 15 acres of fertile land, just 30 mins from Bengaluru, where you can customize your own farmland and house to cherish today and the generations to come.

Discover yourself, revitalize with fresh air and nourish your soul. Amidst the fields of your choice, own an Organic farm with all the comforts and a luxury home for a fulfilling life.

At Just
Rs.300 per sqft



Our Motto

MIYAWAKI FOREST

Growing miyawaki forest makes soil nutritious, supports wildlife and reduces pollution.



PERMACULTURE FOOD FOREST

Three dimensional designs, with life extending in all directions – up, down, and out.



ORGANIC FARMING

No pesticides, no harmful chemicals
Just the caring and healing power
mother nature.



Own your Organic Farm

Reduce the carbon footprint with a cost effective investment option. Own your organic farmland closer to Bengaluru.



A Tax Free Income

Enjoy Tax free income on your farmland.
Great returns that is tax-free with no limits,
that you may invest back in the development.



Be Self Sufficient

Farmland is the ideal safe haven asset in the current environment of high inflation and growing food crises around the world.

Escape

into the
Nature

Just
30 mins from
Bengaluru

Bengaluru
Electronic City

Bommasandra

Jigani

Marsur

Gummalapuram

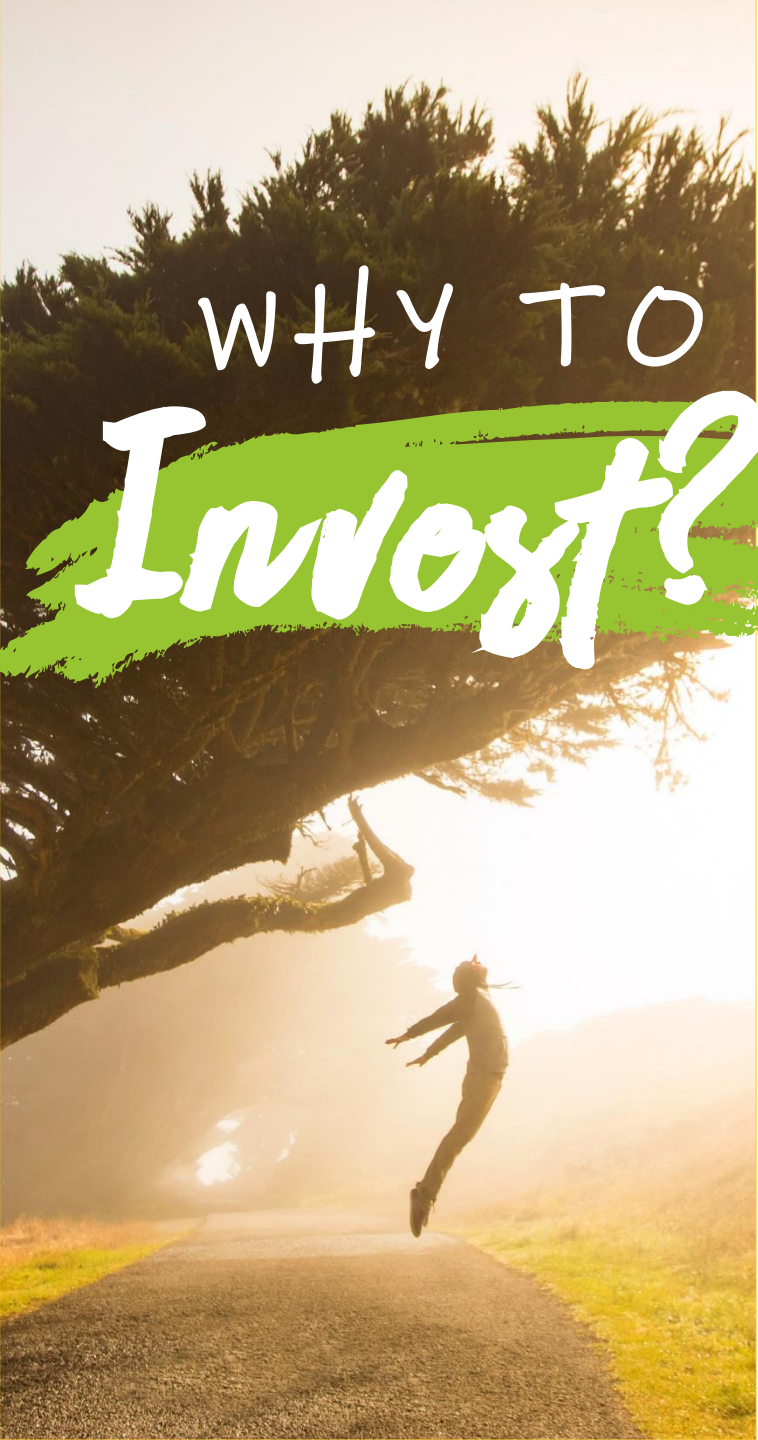
Iggalur

Attibele

Anekal

KAMYAKA WOODS





A. Real estate value

The value of farmland around the project is primed to appreciate by 300-700% in the next five to ten years due to the proximity to major cities.

B. Developments

Closer to Bengaluru and Hosur which is the 13th fastest growing city in the world according to a report from Visual Capitalists. The industrial city has several proposals for industrial development.

C. Connectivity

Just 30 mins from Electronic city and Hosur, we are close to all major infrastructure projects that increases connectivity to these cities. From railways, to roads, and even an airport are all under the pipeline.

D. Natural Ecosystem

Abundance of natural resources, pleasant view, fun and engaging experience with your family and friends and the farm community.

E. Unwind, Network and Socialize

Enjoy nature, sports, fitness, business & personal engagements and parties at your own farm to celebrate friends, family & community.



Enjoy your precious time

Escape into the nature to relish your life...
Best place to be for your creative mind...



Healthy balanced life

Nurture your mind soul and body...
Feel everyday is an exotic vacation...



Own your dream

Build a dream home for your family..
Cherish life to the fullest with dear ones..



Long Term Plantations

Cost effective investment and great ROI...
Self-sufficient farms for all generations...



Proximity to major infrastructures

Closer to cities like Bengaluru & Hosur, access to all basic infrastructures



Farming and Management

Latest technologies in farming, advanced water management & more



Plantations of your choice

Abundant natural resources, access to reliable nurseries



Recreational facilities

Natural swimming pool, meditation zones
Pet friendly farms, Central restaurant



Security and Maintenance

Fully managed gated community with high end security



Work from your farm

24/7 electricity, natural work zones in your private orchards

Features at Kamyaka Woods



ESCAPE INTO THE WOODS TO RELIVE YOUR CHILDHOOD

Make time for Family & Friends and tell them the stories that will carry for legacies..

Show all your Love, care and affection..
What we are truly made of..



MAKE MEMORIES HEALTHY & HAPPY LIFE

Never late than never...

Life is a journey and you
need to have lot of
experiences to look back..

A DREAM WORTH LIVING

INVEST WISELY AND MAKE THE SMART MOVE..

Farmland and Farm house near Bengaluru @ just 275 per sq ft

Plantations

You choose the plantations and we will help you customize it based on the soil quality and other factors.

A sample layout of Mango Orchard starting from 0.25 acres, along with ample fertile land to grow and consume fresh fruits and vegetables with our assisted farm maintenance and management support.

Plantation Farmlands are ready for you to grow your favorite fruits, vegetables and timber plantations.



- A - Mango orchard
- B - Vegetable garden
- C - Fruit garden
- D - Timber plantation



A PLACE WHERE

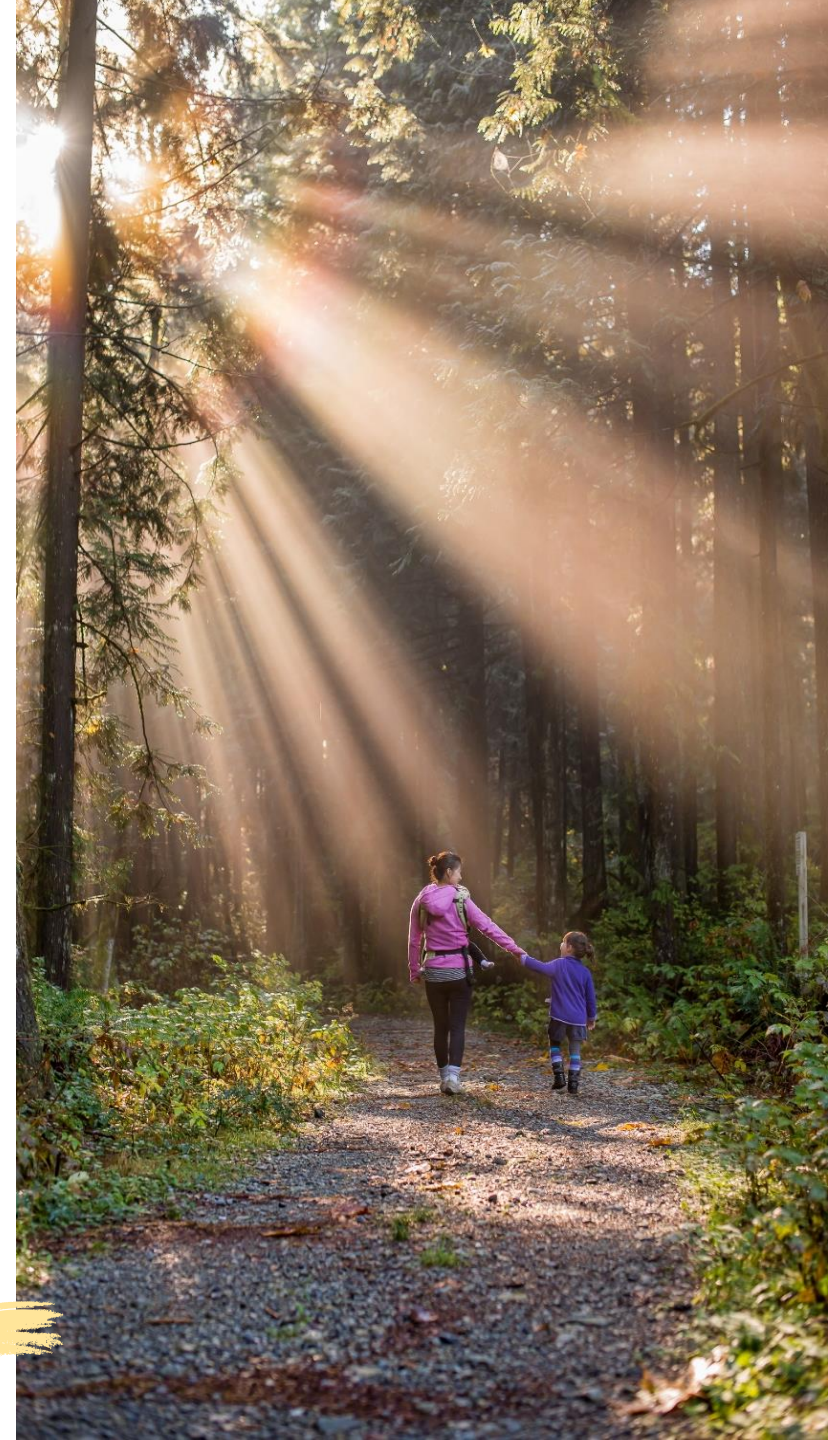
You can heal and rejuvenate amidst the nature..

Enjoy sunshine and sunset like never before..

Camping, bonfire, barbeque make memorable parties...

Joyful interactions with the beauty of flora and fauna...

Admire the serenity and enjoy with family and friends...





CONTACT

+91 6362001608